

# Co-segregation analysis and mapping of the anthracnose *Co-10* and angular leaf spot *Phg-ON* disease-resistance genes in the common bean cultivar Ouro Negro

M. C. Gonçalves-Vidigal · A. S. Cruz · G. F. Lacanallo · P. S. Vidigal Filho ·  
L. L. Sousa · C. M. N. A. Pacheco · P. McClean · P. Gepts · M. A. Pastor-Corrales

Received: 27 March 2012 / Accepted: 21 May 2013 / Published online: 13 June 2013  
© Springer-Verlag Berlin Heidelberg (outside the USA) 2013

**Abstract** Anthracnose (ANT) and angular leaf spot (ALS) are devastating diseases of common bean (*Phaseolus vulgaris* L.). Ouro Negro is a highly productive common bean cultivar, which contains the *Co-10* and *Phg-ON* genes for resistance to ANT and ALS, respectively. In this study, we performed a genetic co-segregation analysis of resistance to ANT and ALS using an F<sub>2</sub> population from the Rudá × Ouro Negro cross and the F<sub>2,3</sub> families from the AND 277 × Ouro Negro cross. Ouro Negro is resistant to races 7 and 73 of the ANT and race 63-39 of the ALS pathogens. Conversely, cultivars AND 277 and Rudá are susceptible to races 7 and 73 of ANT, respectively. Both cultivars are susceptible to race 63-39 of ALS. Co-segregation analysis revealed that *Co-10* and *Phg-ON* were inherited together, conferring resistance to races 7 and 73

of ANT and race 63-39 of ALS. The *Co-10* and *Phg-ON* genes were co-segregated and were tightly linked at a distance of 0.0 cM on chromosome Pv04. The molecular marker g2303 was linked to *Co-10* and *Phg-ON* at a distance of 0.0 cM. Because of their physical linkage in a *cis* configuration, the *Co-10* and *Phg-ON* resistance alleles are inherited together and can be monitored with great efficiency using g2303. The close linkage between the *Co-10* and *Phg-ON* genes and prior evidence are consistent with the existence of a resistance gene cluster at one end of chromosome Pv04, which also contains the *Co-3* locus and ANT resistance quantitative trait loci. These results will be very useful for breeding programs aimed at developing bean cultivars with ANT and ALS resistance using marker-assisted selection.

Communicated by D. Lightfoot.

M. C. Gonçalves-Vidigal · A. S. Cruz · G. F. Lacanallo ·  
P. S. Vidigal Filho · L. L. Sousa · C. M. N. A. Pacheco  
Departamento de Agronomia, Universidade Estadual de  
Maringá, Av. Colombo, 5790, Maringá,  
Paraná 87020-900, Brazil

P. McClean  
Genomics and Bioinformatics Program, Department of Plant  
Sciences, North Dakota State University, Fargo,  
ND 58105, USA

P. Gepts  
Section of Crop and Ecosystem Sciences, Department of Plant  
Sciences/MS1, University of California,  
Davis, CA 95616-8780, USA

M. A. Pastor-Corrales (✉)  
Soybean Genomics and Improvement Laboratory,  
USDA-ARS, BARC-West, Beltsville, MD 20705, USA  
e-mail: talo.pastor-corrales@ars.usda.gov

## Introduction

The common bean (*Phaseolus vulgaris* L.) is a very important human food, particularly in many countries of the Americas and eastern and southern Africa. In these countries, the common bean is recognized as an especially important source of protein, complex carbohydrates, fiber, and minerals in the diet of millions of individuals (Broughton et al. 2003; Gepts et al. 2008). Moreover, the common bean is the most widely cultivated species of the genus *Phaseolus* and accounts for approximately 95 % of the world's *Phaseolus* bean production. However, this crop is affected by several biotic, edaphic, and climatic factors that decrease its yields (Schwartz and Pastor-Corrales 1989). Among the biotic factors, diseases can cause severe yield losses and reduce the quality of dry and snap beans worldwide (Singh and Schwartz 2010). Anthracnose (ANT), caused by *Colletotrichum lindemuthianum* (Sacc.

& Magnus) Briosi & Cavara, and angular leaf spot (ALS), caused by *Pseudocercospora griseola* (Sacc.) Crous and Braun (Crous et al. 2006), are among the most widespread diseases of the common bean in the tropics. Both ANT and ALS are widespread in Brazil and eastern and southern Africa, causing crop losses of up to 100 % due to ANT and up to 70 % due to ALS (Correa-Victoria et al. 1989; Pastor-Corrales and Tu 1989; Singh and Schwartz 2010; Mahuku et al. 2009, 2011; Oblessuc et al. 2012). The pathogens that cause ANT and ALS are characterized by extensive diversity in their virulence; each pathogen has many virulent strains, which are known as races.

Host resistance is the most cost-effective strategy for controlling ANT and ALS in the common bean. Disease-resistant common bean cultivars are easily adopted by farmers and do not generate environmental risks. Resistance to ANT and ALS is conditioned primarily by single dominant genes. Fourteen genes for resistance to ANT with the *Co* designation have been identified (Kelly and Vallejo 2004; Gonçalves-Vidigal et al. 2008, 2009, 2011, 2012a). Similarly, seven independent dominant genes identified by the *Phg* symbol have been reported to confer resistance to *P. griseola* (Caixeta et al. 2003, 2005; Gonçalves-Vidigal et al. 2011; Mahuku et al. 2009, 2011). However, the names of many of these genes have not been submitted to the Bean Improvement Cooperative Genetics Committee (<http://bic.css.msu.edu/Genetics.cfm>). Ouro Negro is a black-seeded Mesoamerican cultivar derived from the CIAT accession G 3680, also known as Honduras 35. This cultivar, which was introduced in Brazil in 1991, is highly productive and exhibits desirable agronomic and cooking characteristics (Alzate-Marin et al. 2003; Souza et al. 2011). In Brazil, Ouro Negro is resistant to a broad spectrum of races of ANT, ALS, and rust and exhibits excellent morpho-agronomic traits. Thus, this cultivar has been recommended by the National Agricultural Research System (SNPA) for cultivation in several Brazilian states (Alzate-Marin et al. 2004).

Previous studies have identified the disease-resistance genes *Co-10* (ANT resistance), *Phg-ON* (ALS resistance), and *Ur-14* (rust resistance) in Ouro Negro. These three genes are considered very important for common bean breeding programs in Brazil (Alzate-Marin et al. 2003; Souza et al. 2011). Ouro Negro confers resistance to *Colletotrichum lindemuthianum* races 7, 9, 23, 55, 64, 67, 73, 79, 81, 83, 87, 89, 95, 102, 117, 119, 343, 453, 1033, 1545, and 1600 and to *P. griseola* races 31-31, 31-55, 63-39, 63-47, 31-23, 63-55, and 63-63 (Faleiro et al. 2001; Alzate-Marin et al. 2003; Gonçalves-Vidigal and Kelly 2006; Gonçalves-Vidigal et al. 2009; Ragagnin et al. 2009). Thus, Ouro Negro is an important source of disease resistance in the bean breeding projects of Brazil and has been used to develop ANT-resistant dry bean cultivars (Alzate-Marin et al. 2003; Souza et al. 2011).

The common bean ( $2n = 2x = 22$ ) consensus map is organized into 11 chromosomes (Nodari et al. 1993; Freyre et al. 1998; Pedrosa-Harand et al. 2008). Gepts (1999) and Kelly et al. (2003) reviewed the development of integrated consensus maps of the 11 chromosomes in both the common bean and cowpea (*Vigna unguiculata* L. Walp). These authors reported the map locations of major resistance genes to bean rust, ANT, common bacterial blight, and white mold in gene clusters on chromosomes Pv01, Pv04, Pv07, and Pv11 in the common bean. Clusters of *Co*-ANT and *Ur*-rust resistance genes have been reported on Pv01, Pv04, and Pv011 (Geffroy et al. 1999; Miklas et al. 2002; Kelly and Vallejo 2004; Miklas et al. 2006; Geffroy et al. 2009). Among these, the Pv04 cluster, in which the *Co-10* (ANT) resistance gene resides, contains a large number of genes that confer resistance to various other common bean pathogens. The ANT resistance genes included in the Pv04 cluster are *Co-y*, *Co-z*, and *Co-15* of Andean origin and *Co-R<sub>V</sub>*, *Co-3*, *Co-9*, and *Co-10* of Mesoamerican origin (Adam-Blondon et al. 1994; Geffroy et al. 1999, 2008; Rodríguez-Suárez et al. 2007; David et al. 2008; Gonçalves et al. 2010; Campa et al. 2011). Recent evidence has confirmed that *Co-15* is also located on Pv04 (Sousa et al. 2013). Moreover, Lopez et al. (2003) identified clusters of resistance genes on Pv04 that are effective against several strains of *C. lindemuthianum*, *P. griseola*, and the bean golden yellow mosaic virus.

Similar gene clusters have been described in other species. The Pv04 cluster containing the *Co-10* and *Phg-ON* genes has a homologous cluster in the soybean genome (Ashfield et al. 2012). Moreover, McClean et al. (2010) established that the Pv04 region was bounded by molecular markers g1375 and g2685, and the interval from 14 to 77 cM was homologous to regions on soybean chromosomes Gm13 and Gm19. Other examples of disease-resistance clusters in soybean include those identified by Meksem et al. (1999), Kang et al. (2012), and McHale et al. (2012). The presence of these clusters is widespread among higher plants, as they are also observed in members of the grass family, such as sorghum (Martin et al. 2011).

Previous studies on Ouro Negro have revealed that the *Co-10* ANT-resistance gene and *Ur-14* rust-resistance gene are positioned 12.3 cM apart on Pv04 (Corrêa et al. 2000); however, the relationship between the *Co-10* and *Phg-ON* ALS-resistance genes in Ouro Negro has not been established. To date, there has been only one report of a linkage between the *Co* and *Phg* genes. Gonçalves-Vidigal et al. (2011) described the co-segregation of the ANT *Co-I<sup>4</sup>* and ALS *Phg-I* disease-resistant genes in the common bean cultivar AND 277, in which the genes were located in a cluster of resistance genes on Pv01.

The objectives of the present study were (a) to investigate the linkage between the *Co-10* (ANT) and *Phg-ON* (ALS) disease-resistance genes and the existence of a

possible gene cluster involving these genes, (b) to verify the linkage between the newly identified molecular marker g2303 and the *Co-10* and *Phg-ON* genes, and (c) to examine the value of the g2303 marker in comparison to the previously identified SF10 molecular marker (Corrêa et al. 2000) for the selection of common bean plants containing the *Co-10* and *Phg-ON* genes.

## Materials and methods

### Genetic crosses and co-segregation analysis

To conduct the co-segregation and linkage studies, two different crosses were performed with the Ouro Negro cultivar, which contains the *Co-10* and *Phg-ON* disease-resistance genes that confer resistance to races 7 and 73 of *C. lindemuthianum* and race 63-39 of *P. griseola*. In the first cross, Ouro Negro was crossed with the common bean cultivar Rudá (susceptible to races 73 of *C. lindemuthianum* and 63-39 of *P. griseola*). In the second cross, Ouro Negro was crossed with the common bean cultivar AND 277 (susceptible to races 7 of *C. lindemuthianum* and 63-39 of *P. griseola*). Both AND 277 and Rudá were used as the female parents. The F<sub>1</sub> seeds were sown in polyethylene vases (48 × 30 × 11 cm) containing a mixture of previously fertilized and sterilized substrate. The plant vases were kept in a greenhouse until the F<sub>2</sub> seeds were produced. A total of 112 F<sub>2</sub> seeds derived from the Rudá × Ouro Negro cross were sown in plastic trays (50 × 30 × 9 cm) containing peat-based substrate. The seedlings were maintained in a greenhouse until the first trifoliolate leaves (stage V3; Gepts 1987) were fully expanded. At that time, the plants were inoculated with race 73 of *C. lindemuthianum* and race 63-39 of *P. griseola*.

A set of 63 F<sub>2</sub> seeds from the AND 277 × Ouro Negro cross was multiplied in pots to obtain the F<sub>3</sub> generation plants. The F<sub>2:3</sub> families, obtained by selfing individual F<sub>2</sub> plants, were used to characterize the corresponding F<sub>2</sub> plants for resistance to race 7 of *C. lindemuthianum* and race 63-39 of *P. griseola*. The dominant violet flower trait, which was inherited from the resistant male Ouro Negro parent, was observed in the F<sub>1</sub> plants, confirming that they were hybrids. The resistance genotype of each F<sub>2</sub> plant was inferred from the phenotypes of the corresponding F<sub>2:3</sub> families.

### Inocula of *Colletotrichum lindemuthianum* and *Pseudocercospora griseola*

Races 7 and 73 of *C. lindemuthianum* were obtained from the mycology collection of NUPAGRI (Núcleo de Pesquisa Aplicada a Agricultura, Universidade Estadual de Maringá, State of Parana, Brazil), and *P. griseola* race 63-39 was kindly

provided by Dr. M. Goreti de Almeida Oliveira of the “Instituto de Biotecnologia Aplicada à Agropecuária” (Bioagro), Universidade Federal de Viçosa, State of Minas Gerais, Brazil. The classification as races 7, 73, and 63-39 was confirmed by inoculating two separate sets of 12 common bean differential cultivars used to characterize the virulence spectra of the ANT and ALS pathogens (Pastor-Corrales 1991). The initial inocula of races 7 and 73 of *C. lindemuthianum* and race 63-39 of *P. griseola* were obtained from monosporic cultures. The subsequent inocula of the ANT races were produced on young green common bean pod medium incubated at 22 °C for 14 days. The inoculum of race 63-39 of ALS was first multiplied in Petri dishes containing 1–2 mL of a solution of 800 mL of sterilized water, 200 mL of commercial tomato sauce, 15 g of agar, 4.5 g of calcium carbonate (CaCO<sub>3</sub>), and 10 µg mL<sup>-1</sup> of streptomycin (Sanglard et al. 2009). Subsequent inocula of race 63-39 were produced in Petri dishes containing the tomato medium and maintained in a BOD incubator at 24 °C for 15 days. Spore suspensions were adjusted to 1.2 × 10<sup>6</sup> and 1.2 × 10<sup>4</sup> conidia mL<sup>-1</sup> for *C. lindemuthianum* and *P. griseola*, respectively.

### Inoculation and evaluation of the Ouro Negro × Rudá F<sub>2</sub> population

The parental, F<sub>1</sub> generation, and 112 F<sub>2</sub> plants of the Rudá × Ouro Negro cross were simultaneously inoculated with race 73 of *C. lindemuthianum* and race 63-39 of *P. griseola* according to Gonçalves-Vidigal et al. (2001). After the expansion of the first trifoliolate leaf, the right leaflet was inoculated with *C. lindemuthianum* and the left leaflet with *P. griseola*. Each pathogen was inoculated separately using small brushes (Tigre<sup>®</sup> model 266, number 14). After inoculation, the plants were placed in a mist chamber for 48 h at a temperature of 20 ± 2 °C with light controlled at 12 h of daylight and 12 h of darkness (light intensity of 300 µmol m<sup>-2</sup> s<sup>-1</sup> at a height of 1 m) and a relative humidity of >95 %. After the incubation period, the inoculated plants were transferred to open-air benches at a temperature of 22 °C with artificial light (12 h of daylight at 25 °C), where they remained for 7 days before visual symptom assessment. The visual assessments of ANT and ALS symptoms were performed using the severity scales proposed by Pastor-Corrales et al. (1995) and Inglis et al. (1988), respectively, with scores of 1–9. Plants with disease reaction scores between 1 and 3 were considered resistant, whereas plants with scores from 4 to 9 were considered susceptible.

### Evaluation of the population from the AND 277 × Ouro Negro cross

For the AND 277 × Ouro Negro cross, 12 plants from each of the 63 F<sub>2:3</sub> families derived from the F<sub>2</sub> population were

also inoculated with races 7 of *C. lindemuthianum* and 63-39 of *P. griseola*. The seedlings were grown under natural light in greenhouses supplemented with 400 W high-pressure sodium lamps providing a total light intensity of  $115 \mu\text{mol m}^{-2} \text{s}^{-1}$  for 7–10 days until they reached the first trifoliolate leaf stage. Twenty parental plants (Ouro Negro and AND 277), 20  $F_1$  plants, and 12 plants from each of the 63  $F_{2:3}$  families were separately inoculated with races 7 of *C. lindemuthianum* and 63-39 of *P. griseola*. A spore suspension containing  $2.0 \times 10^6$  spores  $\text{mL}^{-1}$  of race 7 of *C. lindemuthianum* was inoculated using a DeVilbiss number 15 atomizer powered by an electric air compressor (Schulz, SA, Joinville, Santa Catarina, Brazil). A similar procedure was employed for the inoculation with race 63-39 of *P. griseola*. The procedures used after the bean plant inoculation with the ANT and ALS pathogens and for symptom evaluation were identical to those used for the Rudá  $\times$  Ouro Negro population.

#### DNA extraction and bulked segregant analysis

The DNA extraction process was performed according to Afanador et al. (1993) with some modifications; the DNA was extracted from the central leaflet from the first trifoliolate leaf directly with 400  $\mu\text{L}$  of CTAB extraction buffer. A total of 23 molecular markers, all mapping to chromosome Pv04 (PhaseolusGenes database: <http://phaseolusgenes.bioinformatics.ucdavis.edu>), were chosen for testing. The markers included 10 sequence tagged sites (STS) (McConnell et al. 2010), eight microsatellites (Blair et al. 2003; Gaitán-Solís et al. 2002), and five SCARs (Corrêa et al. 2000; Corrêa et al. 2001; Queiroz et al. 2004). For each  $F_2$  plant from the Rudá  $\times$  Ouro Negro cross inoculated simultaneously with races 73 of *C. lindemuthianum* and 63-39 of *P. griseola*, the total genomic DNA was isolated from the newly emerged first trifoliolate leaflet. The same procedure was used to isolate DNA from the  $F_2$  plants from the AND 277  $\times$  Ouro Negro cross. The resistant or susceptible phenotype of these  $F_2$  plants was inferred from the phenotypes of the 63  $F_{2:3}$  families that were separately inoculated with races 7 of *C. lindemuthianum* and 63-39 of *P. griseola*. Two contrasting DNA bulks were constructed by pooling equal volumes of fluorometrically standardized DNA from five  $F_2$  plants that were homozygous RR for the resistant genotype and rr for the susceptible genotype (Michelmore et al. 1991). The resistant and susceptible DNA pools were used for bulked-segregant analysis (Michelmore et al. 1991) for the identification of markers potentially linked to the *Co-10* ANT and *Phg-ON* ALS-resistance genes. All markers were tested on the parental plants and the resistant and susceptible bulks.

Of the tested STS and microsatellite markers, only the STS g2303 was polymorphic, with contrasting amplification patterns in the parental materials and the resistant and susceptible bulks and individuals from the bulks. The g2303 molecular marker was retained for subsequent studies. Among the tested SCARs, only SF10 was polymorphic; thus, SF10 was chosen for genotyping the  $F_2$  population derived from the Rudá  $\times$  Ouro Negro cross. In addition, the SF10 marker is linked to the *Ur-14* rust and *Co-10* ANT-resistance genes of Ouro Negro, and this marker has been mapped to Pv04 (Corrêa et al. 2000).

All amplification reactions were performed with a thermal cycler (MJ Research Inc., Waltham, MA). The polymerase chain reaction (PCR) program for g2303 consisted of 3 min at 95 °C and 35 cycles of 30 s at 92 °C, 1 min at 50 °C, 60 s at 72 °C, followed by a 5 min extension at 72 °C and 4 min at 4 °C. PCRs were performed in 25  $\mu\text{L}$  total reaction volumes containing 40 ng total DNA; 0.2 mM each dNTP; standard *Taq* buffer containing 1.5 mM  $\text{MgCl}_2$  and 0.2  $\mu\text{M}$  forward primer and reverse primer; and one unit of *Taq* DNA polymerase. Following the addition of 2  $\mu\text{L}$  loading buffer (30 % glycerol and 0.25 % bromophenol blue), the PCR products for g2303 were analyzed on 6 % polyacrylamide gels stained with SYBR Safe (0.02 %). The PCR for SF10 consisted of 3 min at 94 °C, 35 cycles of 15 s at 94 °C, 1 min at 65 °C, and 90 s at 72 °C, followed by a 7 min extension at 72 °C and 4 min at 4 °C. The PCR products from SF10 were visualized on agarose gels. The DNA bands were visualized under ultraviolet light, and digital images were recorded with an L-PIX Image EX model (Loccus Biotecnologia—Loccus do Brasil, Cotia, SP, Brazil).

#### Molecular mapping

The molecular markers g2303 and SF10 were both analyzed in the BAT93  $\times$  Jalo EEP558 (BJ: 71 lines; Freyre et al. 1998) recombinant inbred lines and in the  $F_2$  populations from the AND 277  $\times$  Ouro Negro and Rudá  $\times$  Ouro Negro crosses. The primer sequences for a segregation of the g2303 marker were as follows: ‘GGGGCGAATCAGG TTCACCA’ (forward) and ‘GGTTTAGGACAATAATG AGAGTGATGTACCGTGT’ (reverse) (McConnell et al. 2010), as described in the PhaseolusGenes database (<http://phaseolusgenes.bioinformatics.ucdavis.edu/markers/?ALL=g2303&format.html>). The primer sequences for SF10 were ‘GGAAGCTTGGTGAGCAAGGA’ (forward) and ‘GGAAGCTTGGCTATGATGGT’ (reverse), according to the BIC database ([http://www.css.msu.edu/bic/PDF/SCAR\\_Markers\\_2010.pdf](http://www.css.msu.edu/bic/PDF/SCAR_Markers_2010.pdf)).

## Statistical analyses

Segregation analyses of the disease reactions of 112 F<sub>2</sub> plants from the Rudá × Ouro Negro cross were performed using the  $\chi^2$  test according to a Mendelian segregation hypothesis of 3 R (resistant) to 1 rr (susceptible). In addition, this test was performed with the data from the 63 F<sub>2,3</sub> families from the AND 277 × Ouro Negro cross according to a segregation hypothesis of 1:2:1 (RR:Rr:rr). A goodness-of-fit test for a 1:1 segregation ratio was performed for the segregation of the g2303 and SF10 markers in the BJ population. Linkage analyses were performed using the MAPMAKER/EXP 3.0 (Lincoln and Lander 1993) computer software to estimate the genetic distances between the g2303 and SF10 markers and the *Co-10* and *Phg-ON* genes in the F<sub>2,3</sub> families derived from the AND 277 × Ouro Negro cross and F<sub>2</sub> population from the Rudá × Ouro Negro cross, respectively. A minimum likelihood of an odds ratio score of  $\geq 3.0$  and a maximum distance of 30 cM were used to test the linkages between these markers, as described by Freyre et al. (1998). The cluster containing the *Co-10/Phg-ON* and g2303 and SF10 markers was localized on Pv04 according to the standardized common bean linkage map nomenclature (Pedrosa-Harand et al. 2008). The map was drawn using MapChart software (Voorrips 2002).

## Results

### Interaction between the two pathogens used for bean plant co-inoculation

To detect a possible interaction between the two pathogens used in this study, we inoculated Ouro Negro (resistant to races 73 and 63-39) and Rudá (susceptible to races 73 and 63-39) singly with race 73 or race 63-39 of the ANT and ALS pathogens, respectively. We also inoculated these cultivars simultaneously with the same two races; the right leaflet was inoculated with *C. lindemuthianum*, and the left leaflet was inoculated with *P. griseola*. In both inoculation schemes, Ouro Negro was resistant and Rudá was susceptible to races 73 and 63-39. These results confirm previous observations by Gonçalves-Vidigal et al. (2012b). These authors inoculated singly the Ouro Negro (resistant to race 73 and susceptible to 63-23), Mexico 54 and Cornell 49-242 (susceptible to race 73 and resistant to race 63-23), and Rudá (susceptible to both races) cultivars with race 73 or 63-23 of the ANT and ALS pathogens. Simultaneous inoculation was also performed using the same cultivars with the 73 and 63-23 races. In both inoculation systems, Ouro Negro was resistant to race 73 and susceptible to 63-23; Mexico 54 and Cornell 49-242 were susceptible to race 73 and resistant to race 63-23, and Rudá

was susceptible to both races. The results indicated that there was no interaction between these pathogens when inoculated simultaneously on the same bean plants.

### Genetic resistance and co-segregation of the *Co-10* and *Phg-ON* genes

A total of 112 F<sub>2</sub> plants derived from the Rudá × Ouro Negro cross and 20 plants each from the parental and F<sub>1</sub> generation were inoculated simultaneously with race 73 of *C. lindemuthianum* and race 63-39 of *P. griseola*. Nine days after the inoculation of the plants with both pathogens, a segregation was observed in the F<sub>2</sub> population, with 84 plants resistant and 28 susceptible to *C. lindemuthianum* ( $P = 1.0$ ) and 83 plants resistant and 29 susceptible ( $P = 0.83$ ) to *P. griseola* (Table 1). Except for one plant, the 112 F<sub>2</sub> plants from the Rudá × Ouro Negro cross exhibited identical resistant and susceptible phenotypes; that is, all but one of the 112 F<sub>2</sub> plants that were resistant to the ANT pathogen were also resistant to the ALS pathogen. Similarly, plants that were susceptible to the ANT pathogen were also susceptible to the ALS pathogen.

The segregation observed in the 63 F<sub>2,3</sub> families derived from the AND 277 × Ouro Negro cross inoculated separately with races 7 of *C. lindemuthianum* and 63-39 of *P. griseola* exhibited a similar co-segregation of resistance/susceptibility to both pathogens (Table 2). All plants that were resistant to ANT were also resistant to the ALS pathogen, and the plants that were susceptible to ANT were also susceptible to ALS. Thus, no recombinants were observed in these F<sub>2,3</sub> families, suggesting that the *Co-10* and *Phg-ON* genes are very tightly linked. The 63 F<sub>2,3</sub> families were segregated into classes as follows: 14RR:34Rr:15rr ( $P = 0.81$ ). These results revealed a co-segregation between the *Co-10* and *Phg-ON* genes that fit a 1R:2Rr:1S ratio for a single dominant gene.

As noted earlier, except for one plant, the 112 F<sub>2</sub> plants from the Rudá × Ouro Negro cross also exhibited identical resistant or susceptible phenotypes. Thus, the segregation results from both the Rudá × Ouro Negro cross and from the AND 277 × Ouro Negro cross suggest that the *Co-10* and *Phg-ON* genes are very tightly linked.

These segregation patterns fit the model of a 3R:1S ratio of monogenic, dominant resistance. Therefore, it was concluded that the resistance to races 7 and 73 of *C. lindemuthianum* and 63-39 of *P. griseola* in the Mesoamerican common bean cultivar Ouro Negro is conferred by the tightly linked *Co-10* and *Phg-ON* genes. Other researchers have previously conducted separate ANT and ALS inheritance studies and observed that Ouro Negro exhibited dominant and monogenic inheritance of resistance to each of the pathogens causing these diseases (Corrêa et al. 2001; Alzate-Marin et al. 2003).

**Table 1** Segregation for resistance to races 73 of *Colletotrichum lindemuthianum* and 63-39 of *Pseudocercospora griseola* in common bean F<sub>2</sub> plants from the Rudá × Ouro Negro cross

*R* resistant, *S* susceptible, *RP* resistant parent, *SP* susceptible parent

Parental cross	Generation	Observed ratio (R:S)	Expected ratio (3R:1S)	$\chi^2$	<i>P</i> value (1 <i>df</i> )
Race 73 of <i>C. lindemuthianum</i>					
Ouro Negro	RP	20:0			
Rudá	SP	0:20			
Rudá × Ouro Negro	F <sub>1</sub>	20:0			
Rudá × Ouro Negro	F <sub>2</sub>	84:28	84:28	0.00	1.0
Race 63-39 of <i>P. griseola</i>					
Ouro Negro	RP	20:0			
Rudá	SP	0:20			
Rudá × Ouro Negro	F <sub>1</sub>	20:0			
Rudá × Ouro Negro	F <sub>2</sub>	83:29	84:28	0.04	0.83

**Table 2** Segregation for resistance to races 7 of *Colletotrichum lindemuthianum* and 63-39 of *Pseudocercospora griseola* in 63 F<sub>2:3</sub> plants from the AND 277 × Ouro Negro cross

*RP* resistant parent, *SP* susceptible parent

<sup>a</sup> F<sub>2:3</sub> families were classified as having all individuals resistant (RR), individuals resistant and susceptible (RS), and all individuals susceptible (SS)

Parental cross	Generation	Observed ratio (RR:RS:SS) <sup>a</sup>	Expected ratio (1RR:2RS:1SS)	$\chi^2$	<i>P</i> value (2 <i>df</i> )
Race 7 of <i>C. lindemuthianum</i> , the ANT pathogen of common bean					
Ouro Negro	RP	20:0:0			
AND 277	SP	0:0:20			
AND 277 × Ouro Negro	F <sub>1</sub>	20:0			
AND 277 × Ouro Negro	F <sub>2:3</sub>	14:34:15	15.75:31.5:15.75	0.43	0.81
Race 63-39 of <i>P. griseola</i> , the ALS pathogen of common bean					
Ouro Negro	RP	20:0:0			
AND 277	SP	0:0:20			
AND 277 × Ouro Negro	F <sub>1</sub>	20:0			
AND 277 × Ouro Negro	F <sub>2:3</sub>	14:34:15	15.75:31.5:15.75	0.43	0.81

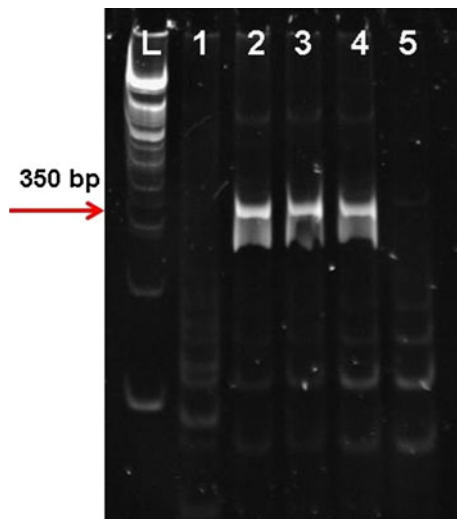
### Marker analysis and mapping of the *Co-10* and *Phg-ON* genes

In order to identify a molecular marker linked to the *Co-10* and *Phg-ON* resistance genes and determine the chromosomal location of these genes, 23 molecular markers previously mapped on Pv04 were evaluated using bulked segregant analysis (Michelmore et al. 1991). Of the 23 tested molecular markers, only g2303 and SF10 exhibited polymorphisms characterized by contrasting amplification patterns in the parental materials and the resistant versus susceptible bulks or individuals and were chosen for further studies. The SF10 marker amplified a band of 1072 bp in the genomic region of interest in the resistant Ouro Negro parental plants and the resistant bulk. The g2303 marker amplified a 350 bp fragment in the resistant parental Ouro Negro plants and in all resistant F<sub>2</sub> plants from the Rudá × Ouro Negro and AND 277 × Ouro Negro crosses. The presence of the 350 bp amplicon of g2303 in Ouro Negro (*Co-10/Phg-ON*), Mexico 222 (*Co-3*), and BAT 93 (*Co-3*<sup>3</sup>; Méndez-Vigo et al. 2005) is presented in Fig. 1;

conversely, this marker was absent in the Corinthiano (*Co-15*) and Rudá cultivars.

As illustrated in Table 3, the co-segregation of resistance versus susceptibility to ALS and ANT and the SF10 marker in the F<sub>2</sub> population from the Rudá × Ouro Negro cross revealed a segregation pattern of 92(+):20(-), indicating that SF10 is linked to the *Co-10* and *Phg-ON* loci at a distance of 7.8 cM.

The results of the co-segregation analyses of the F<sub>2:3</sub> families from the AND 277 × Ouro Negro cross inoculated separately with ANT and ALS and the molecular analysis using the g2303 marker are depicted in Table 4. The genetic linkage analysis resulted in a segregation of 48(+):15(-), indicating a good fit to the expected ratio of 3R:1S (*P* = 0.83). All 48 resistant plants possessed the g2303 molecular marker, and the marker was absent in the 15 susceptible plants. The lack of recombinants among the *Co-10* and *Phg-ON* genes and the g2303 marker indicated that g2303 is tightly linked to these genes and can be used to map the *Co-10* and *Phg-ON* resistance genes of Ouro Negro.



**Fig. 1** Electrophoretic analysis of the amplification products from the g2303 marker. Lanes: L 100 bp ladder, 1 Corinthiano, 2 Ouro Negro, 3 BAT 93, 4 Mexico 222, 5 Rudá. The arrow indicates the DNA band of 350 bp linked to the resistance cluster *Co-10/Phg-ON*

Figure 2 presents the distances and locations of the *Co-3<sup>4</sup>* (ANT resistance) and *Phg-3* (ALS resistance) genes and the g2303 and SF10 markers on Pv04. The linkage analysis revealed that the g2303 marker was linked to the ANT and ALS genes at a distance of 0.0 cM on Pv04 and that the SF10 marker was linked at a distance of 7.8 cM.

Marker g2303, which was previously mapped to chromosome Pv04 (McConnell et al. 2010), was tested in the BAT93/Jalo EEP558 (BJ) RI population, resulting in a segregation of 36(+):37(−) ( $\chi^2 = 0.013$ ;  $P = 0.90$ ), for a good fit to a 1R:1S ratio. In addition, the SF10 marker, positioned on chromosome Pv04 (Corrêa et al. 2000), was also assessed in the same mapping population, yielding a ratio of 38(+):35(−) ( $\chi^2 = 0.12$ ;  $P = 0.72$ ) and tight linkage with g2303 (Fig. 2).

## Discussion

In this study, to better understand the existing association between the *Co-10* and *Phg-ON* genes and the trait of simultaneous resistance to two major common bean pathogens, *C. lindemuthianum* and *P. griseola*, we performed co-segregation and linkage analyses of the F<sub>2</sub> population from the Rudá × Ouro Negro cross and the F<sub>2:3</sub> families from the AND 277 × Ouro Negro cross.

The co-segregation between the *Co-10* and *Phg-ON* resistance genes for the ANT and ALS pathogens, respectively, was detected when the F<sub>2</sub> population from the Rudá (S) × Ouro Negro (R) cross was simultaneously inoculated with both pathogens. We observed only one recombinant in this F<sub>2</sub> population, suggesting a tight linkage (0.9 cM) between the *Co-10* ANT and *Phg-ON* ALS-resistance genes in Ouro Negro. These results also indicated that the resistance of Ouro Negro to race 73 of *C. lindemuthianum* and race 63-39 of *P. griseola* was linked to the g2303 and SF10 molecular markers. As expected, the genotyping of the SF10 marker in this F<sub>2</sub> population revealed that it is linked to the *Co-10* and *Phg-ON* loci at a distance of 7.8 cM. A previous study reported that the SF10 marker was linked to the *Ur-14* rust and *Co-10* ANT-resistance genes on chromosome Pv04 at a distance of  $6.0 \pm 1.3$  cM (Corrêa et al. 2000).

In addition, to obtain more precise phenotypic results, we evaluated 63 F<sub>2:3</sub> families from the AND 277 (S) × Ouro Negro (R) cross inoculated separately with race 7 of *C. lindemuthianum* and race 63-39 of *P. griseola*. Each of the 63 F<sub>2:3</sub> families exhibited identical responses to both pathogens. The data for the segregation of these F<sub>2:3</sub> families revealed a tight linkage between the *Co-10* and *Phg-ON* genes. The segregation obtained for both pathogens fit the expected ratio of 1RR:2Rr:1rr. No recombinants were observed during the evaluation of the F<sub>2:3</sub> families, revealing a tight linkage of the two genes.

**Table 3** Reaction of F<sub>2</sub> plants from the Rudá × Ouro Negro common bean cultivar cross inoculated with races 73 of *Colletotrichum lindemuthianum* and 63-39 of *Pseudocercospora griseola* and the presence <sup>c</sup>(+) or absence (−) of the SF10 molecular marker

Generation	Observed numbers of plants resistant to races 73 and 63-39				Expected ratio 3:0:0:1 <sup>a</sup>	$\chi^2$	P value (3 df)	Linkage distance (cM) <sup>b</sup> <i>Co-10/Phg-ON</i>
	R <sup>ANT</sup>	R <sup>ALS</sup>	R <sup>ANT</sup> S <sup>ALS</sup>	S <sup>ANT</sup> R <sup>ALS</sup>				
F <sub>2</sub>	83	1	0	28	84:0:0:28	0.023	0.92	0.9
SF10	92 (+)	0	0	20 (−)	84:0:0:28	3.047	0.09	7.8

R resistant plants, S susceptible plants, ANT anthracnose, ALS angular leaf spot

<sup>a</sup> Two dominant genes in absolute linkage

<sup>b</sup> Linkage distance between the *Co-10/Phg-ON* genes indicates one recombinant was observed for the reaction to both pathogens

<sup>c</sup> Marker present (+), absent (−)

**Table 4** Reaction of F<sub>2:3</sub> plants from the AND 277 × Ouro Negro cross of common bean cultivars inoculated with races 7 of *Colletotrichum lindemuthianum* and 63-39 of *Pseudocercospora griseola* and the presence (+) or absence (–) of the g2303 molecular marker

Generation	Observed numbers of plants				Expected ratio <sup>a</sup>	$\chi^2$	P value (3 df)	Linkage distance (cM) <sup>b</sup>
	Observed ratio to race 7 1RR:RS:SS		Observed ratio to race 63-39 RR:RS:SS					
F <sub>2:3</sub>	14:34:15		14:34:15		15.75:31.5:5.75	0.43	0.81	0.0
(+) Presence and (–) absence of marker in F <sub>2</sub> plants	48 (+)	0	0	15 (–)	47.25:0:0:15.75	0.05	0.83	0.0

R resistant plants, S susceptible plants

<sup>a</sup> Two dominant genes in linkage

<sup>b</sup> Linkage distance between the g2303 marker and the *Co-10/Phg-ON* genes indicates no recombinants were observed

<sup>c</sup> Marker present (+), absent (–)

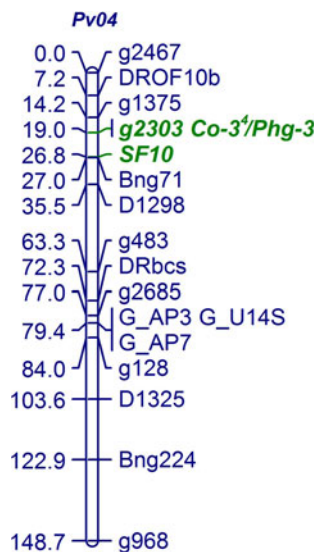
The molecular analysis of F<sub>2</sub> population corresponding to the above-mentioned F<sub>2:3</sub> families revealed close linkage between the *Co-10* ANT and ALS *Phg-ON* resistance genes and g2303 maker (0.0 cM). To date, SF10 is the only mapped marker linked to Ouro Negro resistance genes (Corrêa et al. 2000). However, we identified g2303 as a molecular marker that is much more tightly linked to these disease-resistance genes.

A previous study involving ANT and ALS established that the ANT *Co-1<sup>4</sup>* and ALS *Phg-1* resistance genes, present in the AND 277 cultivar, co-segregated to form a cluster of resistance genes on Pv01 (Gonçalves-Vidigal et al. 2011). In the course of the present study, we identified a tight linkage between the resistance genes *Co-10* and *Phg-ON*. These genes are also closely linked to a third

gene, the *Ur-14* rust-resistance gene (Corrêa et al. 2000), suggesting the existence of a resistance gene cluster on chromosome Pv04. Prior studies have suggested that the majority of R (resistance) genes reside in clusters, and the frequency of recombination between clustered genes can vary strikingly, even within a single cluster (McDowell and Simon 2006). David et al. (2008) confirmed that the B4 (Pv04) R gene cluster is very large, spanning several megabases. Moreover, Oblessuc et al. (2012) reported the existence of different ANT-resistance genes clustered in the bean genome. In addition, David et al. (2008) observed that this Pv04 cluster contained genes conferring resistance not only to *C. lindemuthianum* but also to other pathogens, such as *Uromyces appendiculatus* (the causal agent of the rust disease) and *Pseudomonas syringae* pv. *phaseolicola* (causal agent of halo blight).

Geffroy et al. (1999, 2000) and Méndez-Vigo et al. (2005) were among the first to describe the *Co-3* gene cluster, which confers specific resistance to different races of *C. lindemuthianum* in the Mesoamerican cultivars Mexico 222 and BAT 93. According to Campa et al. (2011), the gene present in the Andean cultivar Michigan Dark Red Kidney confers resistance to race 1545 of *C. lindemuthianum* and is located within the *Co-3* cluster on Pv04. The *Co-10/Phg-ON* resistance cluster present in Ouro Negro may correspond to the ANT-resistance cluster *Co-3*, as both gene clusters are very closely linked to the molecular marker g2303 on Pv04. However, previously conducted tests in an F<sub>2</sub> population from the Ouro Negro (*Co-10*) × Mexico 222 (*Co-3*) cross, inoculated with race 23 of *C. lindemuthianum*, revealed a lack of allelism between *Co-10* and *Co-3* (Alzate-Marin et al. 2003). In addition, the resistance spectrum of *Co-10* to 21 races of *C. lindemuthianum* is much broader than that of *Co-3*, which is resistant to only six of the same 21 races. These results suggest that *Co-3* is different from *Co-10*.

To verify the independence of the newly identified gene cluster *Co-10/Phg-ON*, electrophoretic analysis of the



**Fig. 2** Genetic distances and locations of the *Co-3<sup>4</sup>* gene for resistance to common bean ANT, the *Phg-3* gene for resistance to ALS, and the molecular markers g2303 and SF10 on linkage group Pv04 of *P. vulgaris* L. using the populations from the AND 277 × Ouro Negro and Rudá × Ouro Negro crosses. The map was drawn with MapChart (Voorrips 2002)



amplification products was conducted to test the association of the g2303 marker with the *Co-10/Phg-ON* and *Co-3* gene cluster and the *Co-15* resistance gene. The g2303 marker was tested in the following cultivars: Corinthiano (*Co-15*), Ouro Negro (*Co-10/Phg-ON*), BAT 93 (*Co-3<sup>3</sup>*), Mexico 222 (*Co-3*), and Rudá. These results revealed an association between g2303 and the *Co-10/Phg-ON* and *Co-3* gene cluster but not with the *Co-15* gene. The *Co-15* gene, present in Corinthiano, is linked to g2685<sup>150</sup>, a marker that also maps on Pv04 (Sousa et al. 2013). A previous study conducted by McConnell et al. (2010) determined that the two markers g2303<sup>350</sup> and g2685<sup>150</sup> are unlinked (58 cM) on chromosome Pv04. The physical position on chromosome Pv04 also confirms a loose association between the two markers as g2303 maps at position 3,356,300 bp and g2685 at position 9,078,200 bp (out of a total chromosome length of 45,960,019 bp; PhaseolusGenes). Similarly, allelism tests conducted by Gonçalves et al. (2010) confirmed that *Co-15* is distinct from the *Co-3*, *Co-3<sup>3</sup>*, and *Co-10* resistance genes. These data suggest the presence of a large gene cluster containing the resistance genes *Co-3*, *Co-9* (now re-labeled *Co-3<sup>3</sup>*), *Co-10*, and *Phg-ON*. An independent locus, *Co-15*, is placed on a distinct chromosome region of Pv04 (Sousa et al. 2013).

The main objective of this study was to verify the presence of a resistance gene cluster in Ouro Negro that not only confers resistance to ANT but also to ALS. In addition, a much more effective molecular marker, g2303, was found linked to the above-mentioned gene clusters (*Co-3/Co-10/Phg-ON*) and it should be recommended to breeding programs. The g2303 marker, in particular, will reduce the time and cost of pyramiding the *Co-10* and *Phg-ON* genes into commercial common bean cultivars. *Co-10* should be considered an additional allele (*Co-3<sup>4</sup>*) of the *Co-3* locus and *Phg-ON* should be re-labeled as *Phg-3*.

**Acknowledgments** This research was financially supported by the National Council for Scientific and Technological Development (CNPq). Anelise S. Cruz was supported by a scholarship from Capes. We would like to thank Andressa Gonçalves Vidigal for additional review of the manuscript. M.C. Gonçalves-Vidigal and P.S. Vidigal Filho are grateful for grants from CNPq.

## References

- Adam-Blondon AF, Sevignac M, Dron M, Bannerot H (1994) A genetic map of common bean to localize specific resistance genes against anthracnose. *Genome* 37:915–924
- Afanador LK, Haley SD, Kelly JD (1993) Adoption of a ‘mini-prep’ DNA extraction protocol for RAPD marker analysis in common bean (*Phaseolus vulgaris* L.). *Ann Rep Bean Improv Coop* 36:10–11
- Alzate-Marin AL, Costa MR, Arruda KM, Barros EG, Moreira MA (2003) Characterization of the anthracnose resistance gene present in Ouro Negro (Honduras 35) common bean cultivar. *Euphytica* 133:165–169
- Alzate-Marin AL, Souza TLPO, Ragagnin VA, Moreira MA, Barros EG (2004) Allelism tests between the rust resistance genes present in common bean cultivar Ouro Negro and genes *Ur-5* and *Ur-11*. *J Phytopathol* 152:60–64
- Ashfield T, Egan AN, Pfeil BE, Chen NWG, Podicheti R, Ratnaparkhe MB, Ameline-Torregrosa C, Denny R, Cannon S, Doyle JJ, Geffroy V, Roe BA, Saghai Maroof MA, Young ND, Innes RW (2012) Evolution of a complex disease resistance gene cluster in diploid *Phaseolus* and tetraploid *Glycine*. *Plant Physiol* 159:336–354
- Blair MW, Pedraza F, Buendia HF, Gaitán-Solís E, Beebe SE, Gepts P, Tohme J (2003) Development of a genome-wide anchored microsatellite map for common bean (*Phaseolus vulgaris* L.). *Theor Appl Genet* 107:1362–1374
- Broughton WJ, Hernandez G, Blair M, Beebe S, Gepts P, Vanderleyden J (2003) Beans (*Phaseolus* spp.)—model food legumes. *Plant Soil* 252:55–128
- Caixeta ET, Borém A, Nietsche S, Moreira MA, Barros EG (2003) Inheritance of angular leaf spot resistance in common bean line BAT 332 and identification of RAPD markers linked to the resistance gene. *Euphytica* 134:297–303
- Caixeta ET, Borém A, Alzate-Marin AL, Fagundes S, Morais SMG, Barros EG, Moreira MA (2005) Allelic relationships for genes that confer resistance to angular leaf spot in common bean. *Euphytica* 145:237–245
- Campa A, Giraldez R, Ferreira JJ (2011) Genetic analysis of the resistance to eight anthracnose races in the common bean differential cultivar Kaboon. *Phytopathology* 101:757–764
- Corrêa RX, Costa MR, Good-God PI, Ragagnin VA, Faleiro FG, Moreira MA, Barros EG (2000) Sequence characterized amplified regions linked to rust resistance genes in the common bean. *Crop Sci* 40:804–807
- Corrêa RX, Good-God PI, Oliveira MLP, Nietsche S, Moreira MA, Barros EG (2001) Herança da resistência à mancha-angular do feijoeiro e identificação de marcadores moleculares flanqueando o loco de resistência. *Fitopatol Bras* 26:27–32
- Correa-Victoria FJ, Pastor-Corrales MA, Saettler AW (1989) Angular leaf spot. In: Schwartz HF, Pastor-Corrales MA (eds) *Bean production problems in the tropics*, 2nd edn. CIAT, Colombia, pp 59–76
- Crous PW, Liebenberg MM, Braun U, Groenewald JZ (2006) Re-evaluating the taxonomic status of *Phaeoisariopsis griseola*, the causal agent of angular leaf spot of bean. *Stud Mycol* 55:163–173
- David P, Sévignac M, Thareau V, Catillon Y, Kami J, Gepts P, Langin T, Geffroy V (2008) BAC end sequences corresponding to the B4 resistance gene cluster in common bean: a resource for markers and synteny analyses. *Mol Genet Genomics* 280: 521–533
- Faleiro FG, Nietsche S, Ragagnin VA, Borém A, Moreira MA, Barros EG (2001) Resistance of common bean rust and angular leaf spot under greenhouse conditions. *Fitopatol Bras* 26:86–89
- Freyre R, Skrock PW, Geffroy V, Adam-Blondon AF, Shirmohamadali A, Johnson WC, Llaca V, Nodari RO, Pereira PA, Tsai SM, Tohme J, Dron M, Nienhuis J, Vallejo CE, Gepts P (1998) Towards an integrated linkage map of common bean. 4. Development of a core linkage map and alignment of RFLP maps. *Theor Appl Genet* 97:847–856
- Gaitán-Solís E, Duque MC, Edwards KJ, Tohme J (2002) Microsatellite repeats in common bean (*Phaseolus vulgaris*): isolation, characterization and cross-species amplification in *Phaseolus* spp. *Crop Sci* 42:2128–2136
- Geffroy V, Sicard D, Oliveira JCF, Sevignac M, Cohen S, Gepts P, Neema C, Langin T, Dron M (1999) Identification of an

- ancestral resistance gene cluster involved in the coevolution process between *Phaseolus vulgaris* and its fungal pathogen *Colletotrichum lindemuthianum*. *Mol Plant Microbe Interact* 12:774–784
- Geffroy V, Sévignac M, De Oliveira JCF, Fouilloux G, Skroch P (2000) Inheritance of partial resistance against *Colletotrichum lindemuthianum* in *Phaseolus vulgaris* and co-localization of quantitative trait loci with genes involved in specific resistance. *Mol Plant Microbe Interact* 13:287–296
- Geffroy V, Sévignac M, Billant P, Dron M, Langin T (2008) Resistance to *Colletotrichum lindemuthianum* in *Phaseolus vulgaris*: a case study for mapping two independent genes. *Theor Appl Genet* 116:407–415
- Geffroy V, Macadre C, David P, Pedrosa-Harand A, Sévignac M, Dauga C, Langin T (2009) Molecular analysis of a large subtelomeric nucleotide-binding-site-leucine-rich-repeat family in two representative genotypes of the major gene pools of *Phaseolus vulgaris*. *Genetics* 181:405–419
- Gepts P (1987) Characterizing plant phenology. In: Wisioł K, Hesketh J (eds) *Plant growth modeling for resource management*. CRC Press, Boca Raton, pp 3–24
- Gepts P (1999) Development of an integrated genetic linkage map in common bean (*Phaseolus vulgaris* L.) and its use. In: Singh S (ed) *Bean breeding for the 21st century*. Kluwer, Dordrecht, The Netherlands, pp 53–91 (389–400)
- Gepts P, Aragão F, de Barros E, Blair MW, Brondani R, Broughton W, Galasso I, Hernández G, Kami J, Lariguet P, McClean P, Melotto M, Miklas P, Pauls P, Pedrosa-Harand A, Porch T, Sánchez F, Sparvoli F, Yu K (2008) Genomics of *Phaseolus* beans, a major source of dietary protein and micronutrients in the tropics. In: Moore PH, Ming R (eds) *Genomics of tropical crop plants*. Springer, Berlin, pp 113–143
- Gonçalves AMO, Gonçalves-Vidigal MC, Vidigal Filho PS, Poletine JP, Lacanallo GF, Coimbra GK (2010) Characterization of the anthracnose resistance gene in Andean common bean Corinthiano cultivar. *Ann Rep Bean Improv Coop* 53:220–221
- Gonçalves-Vidigal MC, Kelly JD (2006) Inheritance of anthracnose resistance in the common bean cultivar Widusa. *Euphytica* 151:411–419
- Gonçalves-Vidigal MC, Sakiyama NS, Vidigal Filho PS, Amaral JRAT, Poletine JP, Oliveira VR (2001) Resistance of common bean cultivar AB 136 races 31 and 69 of *Colletotrichum lindemuthianum*: the *Co-6* locus. *Crop Breed Appl Biotech* 1:99–104
- Gonçalves-Vidigal MC, Lacanallo GF, Vidigal Filho PS (2008) A new gene conferring resistance to anthracnose in Andean common bean (*Phaseolus vulgaris* L.) cultivar ‘Jalo Vermelho’. *Plant Breed* 127:592–596
- Gonçalves-Vidigal MC, Vidigal Filho PS, Medeiros AF, Pastor-Corrales MA (2009) Common bean landrace Jalo Listras Pretas is the source of a new Andean anthracnose resistance gene. *Crop Sci* 49:133–138
- Gonçalves-Vidigal MC, Cruz AS, Garcia A, Kami J, Vidigal Filho PS, Sousa LL, McClean P, Gepts P, Pastor-Corrales MA (2011) Linkage mapping of the *Phg-1* and *Co-1<sup>d</sup>* genes for resistance to angular leaf spot and anthracnose in the common bean cultivar AND 277. *Theor Appl Genet* 122:893–903
- Gonçalves-Vidigal MC, Meirelles AC, Poletine JP, Sousa LL, Cruz AS, Nunes MP, Lacanallo GF, Vidigal Filho PS (2012a) Genetic analysis of anthracnose resistance in ‘Pitanga’ dry bean cultivar. *Plant Breed* 131:423–429
- Gonçalves-Vidigal MC, Vidigal Filho PS, Nogueira LM, Reck SAC, Oliveira MB, Motomiya WR, Lacanallo GF, Cruz AS, Grunvald AK, Nunes MPBP, Sousa LL, Pastor-Corrales MA (2012b) Reaction of common bean cultivars inoculated simultaneously with *Colletotrichum lindemuthianum* and *Pseudocercospora griseola*. *Ann Rep Bean Improv Coop* 55:97–98
- Inglis DA, Hagedorn J, Rand RE (1988) Use of dry inoculum to evaluate beans for resistance to anthracnose and angular leaf spot. *Plant Dis* 72:771–774
- Kang Y, Kim K, Shim S, Yoon M, Sun S, Kim M, Van K, Lee S-H (2012) Genome-wide mapping of NBS-LRR genes and their association with disease resistance in soybean. *BMC Plant Biol* 12:139
- Kelly JD, Vallejo VA (2004) A comprehensive review of the major genes conditioning resistance to anthracnose in common bean. *HortScience* 39:1196–1207
- Kelly JD, Gepts P, Miklas PN, Coyne DP (2003) Tagging and mapping of genes and QTL and molecular marker-assisted selection for traits of economic importance in bean and cowpea. *Field Crops Res* 82:135–154
- Lincoln SE, Lander SL (1993) *Mapmaker/exp 3.0 and Mapmaker/QTL 1.1*. Whitehead Institute of Medical Research. Technical Report, Cambridge
- Lopez CE, Acosta IF, Jara C, Pedraza P, Gaitan-Solis E, Gallego G, Beebe S, Thome J (2003) Identifying resistance gene analogs associated with resistances to different pathogens in common bean. *Phytopathology* 93:88–95
- Mahuku GS, Iglesias AM, Jara C (2009) Genetics of angular leaf spot resistance in the Andean common bean accession G5686 and identification of markers linked to the resistance genes. *Euphytica* 167:381–396
- Mahuku GS, Henriquez MA, Montoya C, Jara C, Teran H, Beebe S (2011) Inheritance and development of molecular markers linked to angular leaf spot resistance genes in the common bean accession G10909. *Mol Breed* 28:57–71
- Martin T, Biruma M, Fridborg I, Okori P, Dixelius C (2011) A highly conserved NB-LRR encoding gene cluster effective against *Setosphaeria turcica* in sorghum. *BMC Plant Biol* 11:151
- McClean P, Mamidi S, McConnell M, Chikara S, Lee R (2010) Synteny mapping between common bean and soybean reveals extensive blocks of shared loci. *BMC Genomics* 11:184
- McConnell M, Mamidi S, Lee R, Chikara S, Rossi M, Papa R, McClean P (2010) Syntenic relationships among legumes revealed using a gene-based genetic linkage map of common bean (*Phaseolus vulgaris* L.). *Theor Appl Genet* 121:1103–1116
- McDowell JM, Simon SA (2006) Recent insights into R gene evolution. *Mol Plant Pathol* 5:437–448
- McHale LK, Haun WJ, Xu WW, Bhaskar PB, Anderson JE, Hyten DL, Gerhardt DJ, Jeddloh JA, Stupar RM (2012) Structural variants in the soybean genome localize to clusters of biotic stress-response genes. *Plant Physiol* 159:1295–1308
- Meksem K, Doubler TW, Chanchaoenchai K, Nijti N, Chang SJ, Arelli APR, Cregan PE, Gray LE, Gibson PT, Lightfoot DA (1999) Clustering among loci underlying soybean resistance to *Fusarium solani*, SDS and SCN in near-isogenic lines. *Theor Appl Genet* 99:1131–1142
- Méndez-Vigo B, Rodríguez-Suárez C, Pañeda A, Ferreira JJ, Giraldez R (2005) Molecular markers and allelic relationships of anthracnose resistance gene cluster B4 in common bean. *Euphytica* 141:237–245
- Michellmore RW, Paran I, Kesseli RV (1991) Identification of markers linked to disease resistance genes by bulked segregant analysis: a rapid method to detect markers in specific genomic regions using segregating populations. *Proc Natl Acad Sci USA* 88:9828–9832
- Miklas PN, Pastor-Corrales MA, Jung G, Coyne DP, Kelly JD, McClean PE, Gepts P (2002) Comprehensive linkage map of bean rust resistance genes. *Ann Rep Bean Improv Coop* 45:125–129

- Miklas PN, Hu J, Grunwald NJ, Larsen KM (2006) Potential application of TRAP (targeted region amplified polymorphism) markers of mapping and tagging disease resistance traits in common bean. *Crop Sci* 46:910–916
- Nodari RO, Tsai SM, Guzmán P, Gilbertson RL, Gepts P (1993) Toward an integrated linkage map of common bean. III. Mapping genetic factors controlling host–bacteria interactions. *Genetics* 134:341–350
- Oblessuc PR, Borges A, Chowdhury B, Caldas DGG, Tsai SM, Camargo LEA, Melotto M (2012) Dissecting *Phaseolus vulgaris* innate immune system against *Colletotrichum lindemuthianum* infection. *PLoS One* 7:e43161
- Pastor-Corrales MA (1991) Estandarización de variedades diferenciales y de designación de razas de *Colletotrichum lindemuthianum*. *Phytopathology* 81:694
- Pastor-Corrales MA, Tu JC (1989) Anthracnose. In: Schwartz HF, Pastor-Corrales MA (eds) Bean production problems in the tropics. CIAT, Colombia, pp 77–104
- Pastor-Corrales MA, Otoyá MM, Molina A, Singh SP (1995) Resistance to *Colletotrichum lindemuthianum* isolates from Middle America and Andean South America in different common bean races. *Plant Dis* 79:63–67
- Pedrosa-Harand A, Porch T, Gepts P (2008) Standard nomenclature for common bean chromosomes and linkage groups. *Ann Rep Bean Improv Coop* 51:106–107
- Queiroz VT, Sousa CS, Costa MR, Sanglard DA, Arruda KMA, Souza TLPO, Ragagnin VA, Barros EG, Moreira MA (2004) Development of SCAR markers linked to common bean angular leaf spot resistance genes. *Ann Rep Bean Improv Coop* 47:237–238
- Ragagnin VA, Souza TLPO, Sanglard DA, Arruda KMA, Costa MR, Alzate-Marin AL, Carneiro JES, Moreira MA, Barros G (2009) Development and agronomic performance of common bean lines simultaneously resistant to anthracnose, angular leaf spot and rust. *Plant Breed* 128:156–163
- Rodríguez-Suárez C, Mendéz-Vigo B, Pañeda A, Ferreira JJ, Giraldez R (2007) A genetic linkage map of *Phaseolus vulgaris* L. and localization of genes for specific resistance to six races of anthracnose (*Colletotrichum lindemuthianum*). *Theor Appl Genet* 114:713–722
- Sanglard DA, Balbi BP, de Barros EG (2009) An efficient protocol for isolation, sporulation and maintenance of *Pseudocercospora griseola*. *Ann Rep Bean Improv Coop* 52:62–63
- Schwartz HF, Pastor-Corrales MA (1989) Bean production problems in the tropics. CIAT, Cali, pp 105–157
- Singh SP, Schwartz F (2010) Breeding common bean for resistance to diseases: a review. *Crop Sci* 50:2199–2223
- Sousa LL, Gonçalves-Vidigal MC, Gonçalves AO, Vidigal Filho PS, Awale H, Kelly JD (2013) Molecular mapping of the anthracnose resistance gene *Co-15* in the common bean cultivars Corinthiano. *Ann Rep Bean Improv Coop* 56:45–46
- Souza TLPO, Dessaune SN, Sanglard DA, Moreira MA, Barros EG (2011) Characterization of the rust resistance gene present in the common bean cultivar Ouro Negro, the main rust resistance source used in Brazil. *Plant Pathol* 60:839–845
- Voorrips RE (2002) Mapchart: software for the graphical presentation of linkage maps and QTLs. *J Hered* 93:77–78